



ALEXANDRA PALACE SAC/CC MEETING

09 March 2023



SIGNAGE AND WAYFINDING IMPROVEMENTS

Some back of house external signage is required to improve client experience and assist with wayfinding;

Utilising brand guidelines and colours to ensure consistency across the site, whether front of house or back of house;

Application to include new signage above the Phoenix B&K – will be same as the signage proposed in the East Court, and in keeping with existing signage in the Palm Court;

Phoenix B&K signage will be lit to indicate to passers-by that it is open for business, especially important in the winter months



Existing Palm Court directional signage





Proposed NorthYardTheatre Stage Door signage

Backstage

Details

- A) Height from the ground to base: 3.8M
- B) Dimensions 4250 x 3550mm
Suggested Production Size: 3M x 3M
- C) Maximum Letter Height: 50mm
- D) Material: 3mm ACM with digital print to face
- E) Maximum projection from the face of the building: 0.003m.
- F) Method of attachment: Plugs and screws into mortar lines.





Proposed NorthYard kit load-in doorway

Backstage

Details

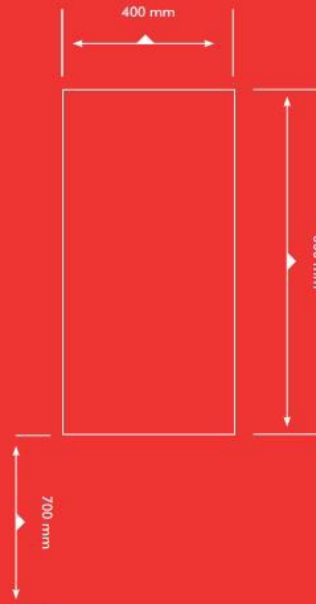
A) Height from the ground to base:
1.5M

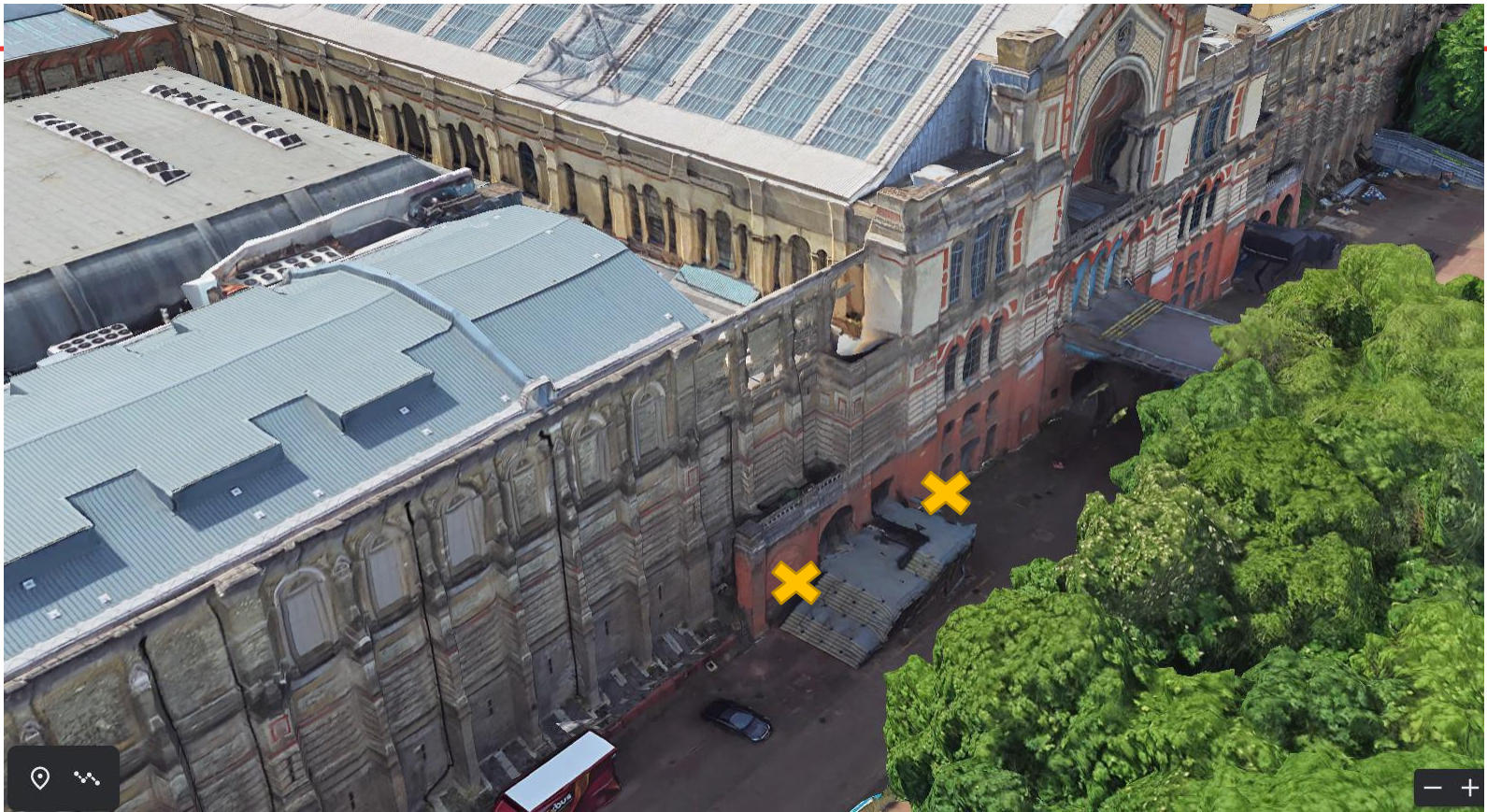
B) Dimensions
Survey Dimensions: Brickwork
column @ 920mm
Suggested Production Size:
800mm x 400mm

C) Maximum Letter Height: 50mm

D) Material: 3mm ACM with digital
print to face

E) Maximum projection from the
face of the building: 0.003m.





Location of external back of house signage

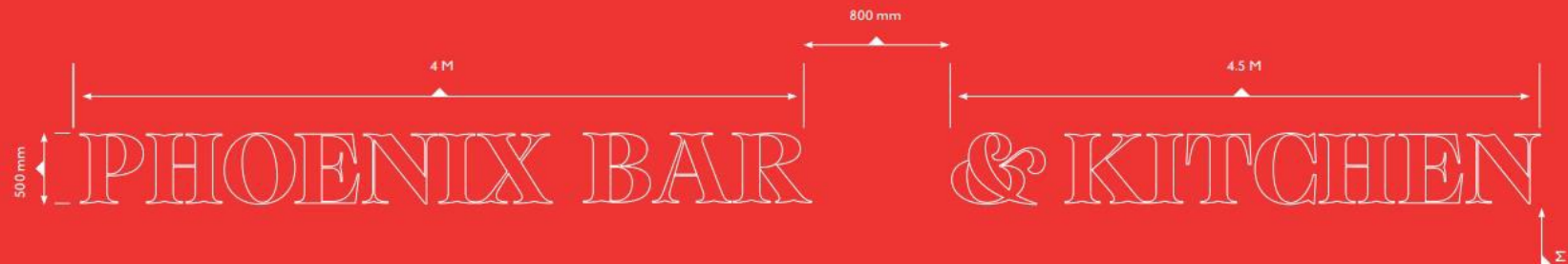


Proposed Phoenix B&K signage

Phoenix Bar

Details

- A) Height from the ground to base: 6M
- B) Dimensions: O/A 9925mm x 2700mm
Suggested Production Size: 10025mm x 2800mm
- C) Maximum Letter Height: 300mm
- D) Maximum projection from the face of the building: 0.01m.
- E) Product Material: 9mm s/s letters with 30mm returns, finished in antique gold PU coating. Externally uplit with linear LED lighting detail.
- F) Method of attachment: Plugs and screws into mortar lines.





**THANKYOU
FORYOUR
CLOSE
ATTENTION**